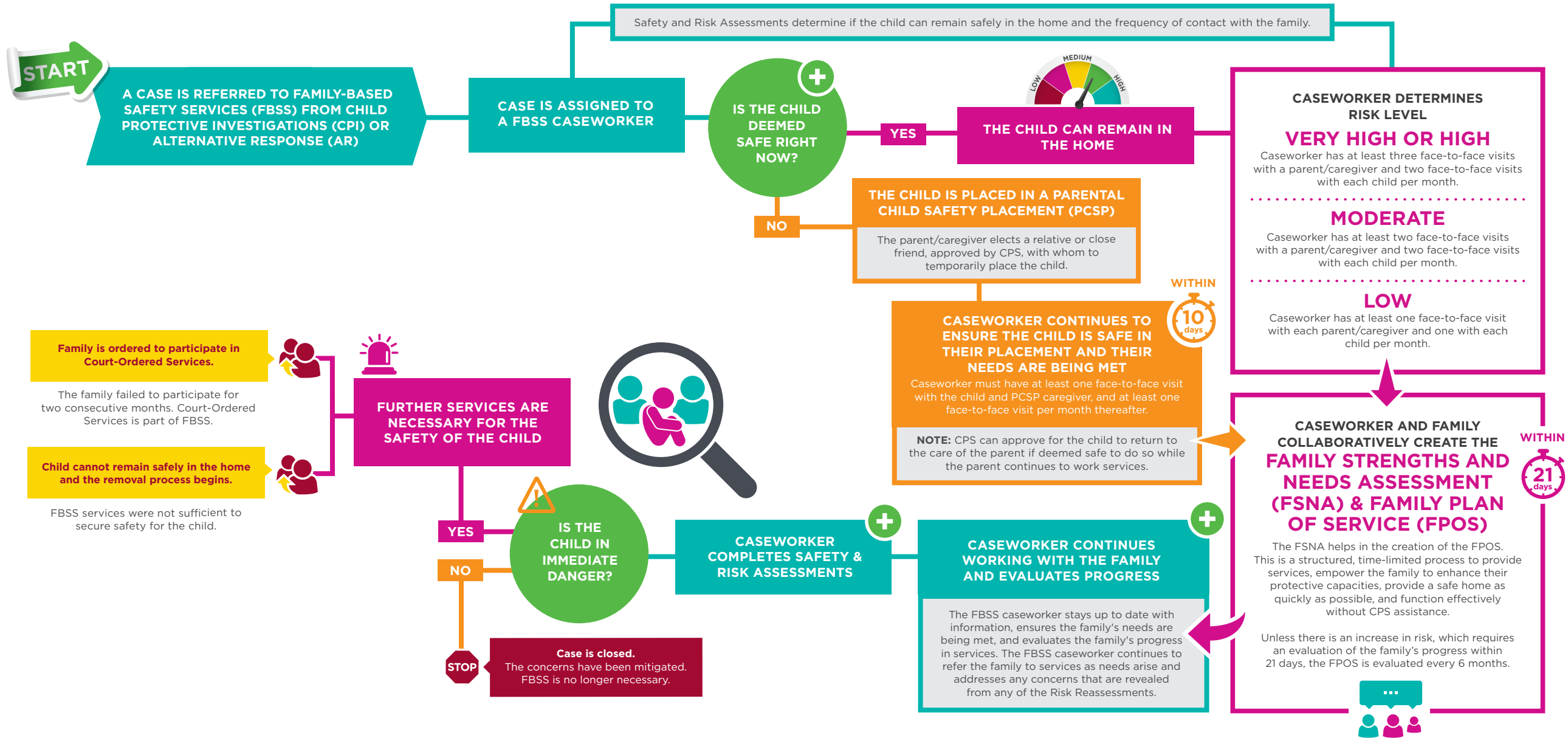




# HOW FAMILY-BASED SAFETY SERVICES WORKS

**LEGEND**

- Learn more on the reverse side
- Case is assigned or referred to another stage of service
- Case is closed





## SAFETY ASSESSMENT

Family-Based Safety Services caseworkers assess safety throughout the entire life of a case. There are times when they more formally utilize the Safety Assessment tool.

### The Family-Based Safety Services caseworker conducts a Safety Assessment:

- When there is a threat to child safety
- When there is an existing safety plan and there is a plan to change safety interventions
- Prior to closing an FBSS case with at least one child being in the home
- When making plans to shift from supervised to unsupervised contact between a child and parent
- Prior to a child returning home from a Parental Child Safety Placement (PCSP)
- When closing an FBSS case while the child still remains in a Parental Child Safety Placement (PCSP). The Safety Assessment is conducted on the parent's home to help determine if there are ongoing threats to child safety

### Note: The FBSS caseworker completes a Safety Assessment within 30 days of submitting the case for closure, unless:

- All of the children in the home have been legally removed and placed into substitute care
- The family is unable to locate
- The only child is deceased

## RISK REASSESSMENT

Family-Based Safety Services caseworkers assess risk throughout the entire life of a case. There are times when they more formally utilize the Risk Reassessment tool.

### The Family-Based Safety Services caseworker conducts a Risk Reassessment:

- 90 days after completing the initial Family Plan of Services (FPOS) and every 90 days thereafter
- When new situations arise that could impact risk

### Note: The FBSS caseworker completes a Risk Reassessment within 30 days of submitting the case for closure, unless:

- All of the children in the home have been legally removed and placed into substitute care
- The family is unable to locate
- The only child is deceased

See back of "How an Investigation is Performed" flowchart for more information on what is included in the Safety and Risk Assessments.