

# The 88<sup>th</sup> Texas Legislative Session Texas Tour

# Panhandle

Saint Francis Ministries • TexProtects

Texas Child Welfare Funders



Philanthropy

s o u t h w e s t

*Connected, Impactful Philanthropy*



**TexProtects**  
Champions for Safe Children



**Prevent Child Abuse**  
Texas™

# INVESTING IN SUPPORT FOR CHILDREN AND FAMILIES

## Transforming Child Welfare in Texas

### Welcome

Cristian Garcia, Saint Francis Ministries

### A Word from Our Sponsor

Texas Child Welfare Funders

### Saint Francis Ministries Advocacy

Cristian Garcia

### Child Protection and Wellbeing Landscape and Legislative Priorities

TexProtects Policy Team

### Breakout Discussions

Audience Participation

### Get Involved

TexProtects



# Welcome

## Cristian Garcia

Chief Advancement Officer for Saint Francis Ministries



# A Word from Our Sponsor

**Texas Child Welfare Funders**

Texas Child Welfare Funders

---





## Texas Child Welfare Funders

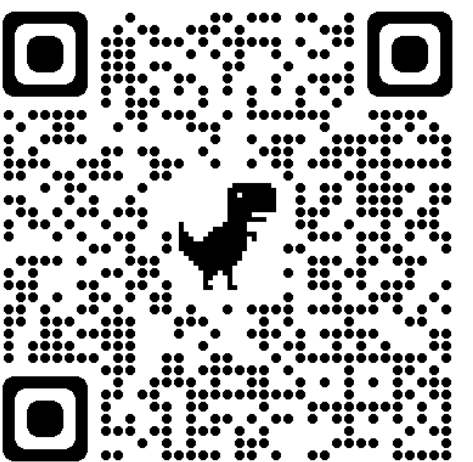


Texas Child Welfare Funders is a peer group of Philanthropy Southwest. It is a community of funders that collaboratively aligns the work of members and keeps them engaged in and informed about child welfare matters across Texas.

Texas Child Welfare Funders exists to optimize the child welfare system from initial report to permanency, ensuring the best outcome for the child.

For more information, funders can go to:

<https://www.philanthropysouthwest.org/texas-child-welfare-funders>

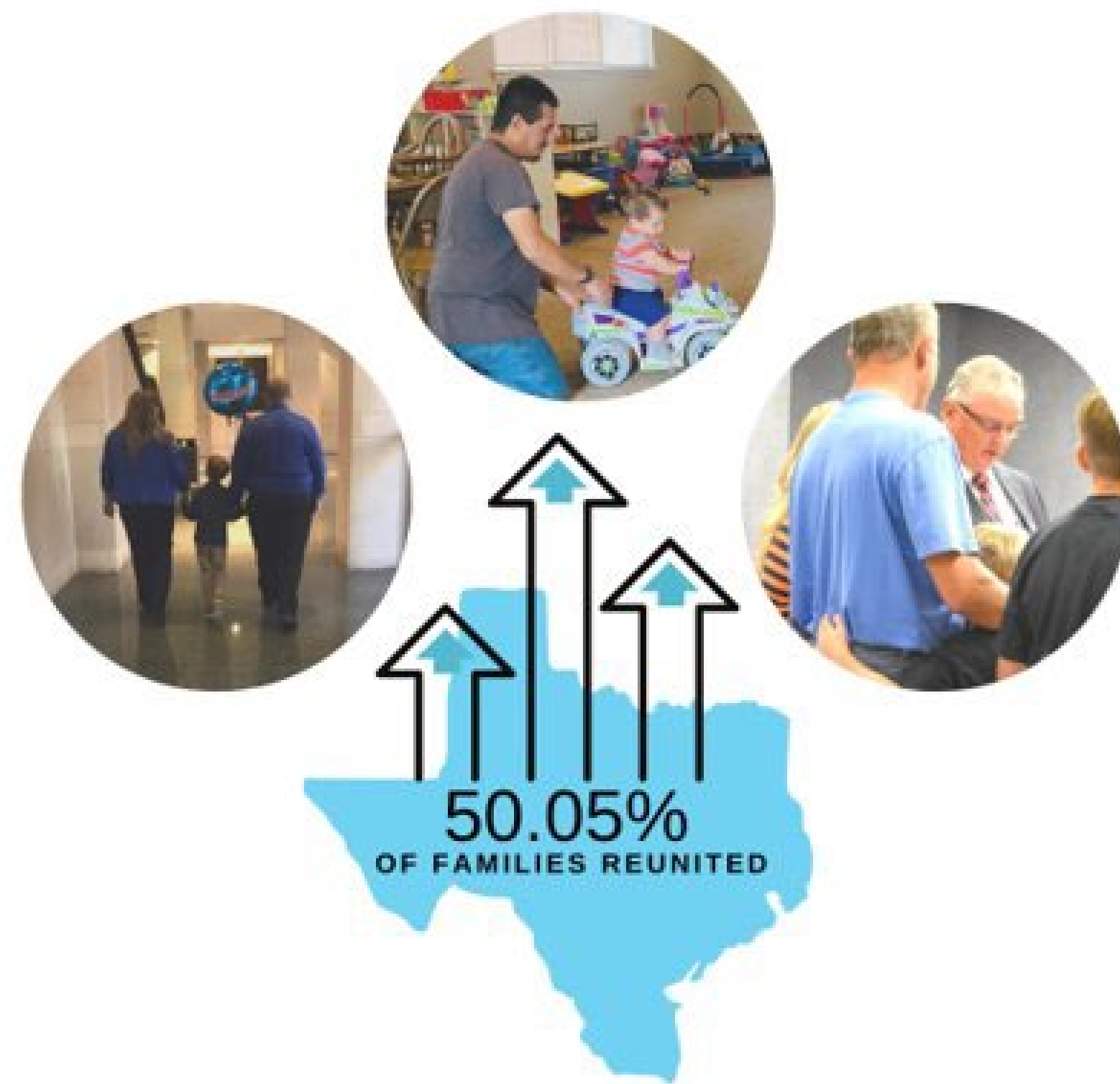


# Saint Francis Ministries Advocacy

**Cristian Garcia**

Chief Advancement Officer for Saint Francis Ministries





Since March 2022,  
average reunification rate is 50.5%

- June 2022 high point of quarter at 54.3%

Children placed in their  
home community:

- June – 54.3%
- July – 53.1%
- Aug – 54.9%

Siblings placed together:  
Average is 65.3%

## Our Organizational Priorities

**CRISTIAN GARCIA**  
Chief Advancement Officer



Liability & Risk – The cost of insurance has risen in the past two years.

Family Preservation – We need to head upstream and keep families together.

Funding - Focus on correct rates for the cost of care of children with includes rate modernization, provider rates, and day care.

Inoperability – We must work on integrating systems for efficiency.

## Our Legislative Priorities



# Child Protection and Child Wellbeing Landscape and Legislative Priorities

**TexProtects Policy Team**



# Mission and Focus

TexProtects is a nonprofit and nonpartisan organization dedicated to protecting Texas children from the trauma of abuse and neglect and empowering families to thrive through education, research and advocacy.

## CHILD PROTECTION

Child Abuse  
Prevention

Family  
Preservation

CPS System and  
Workforce

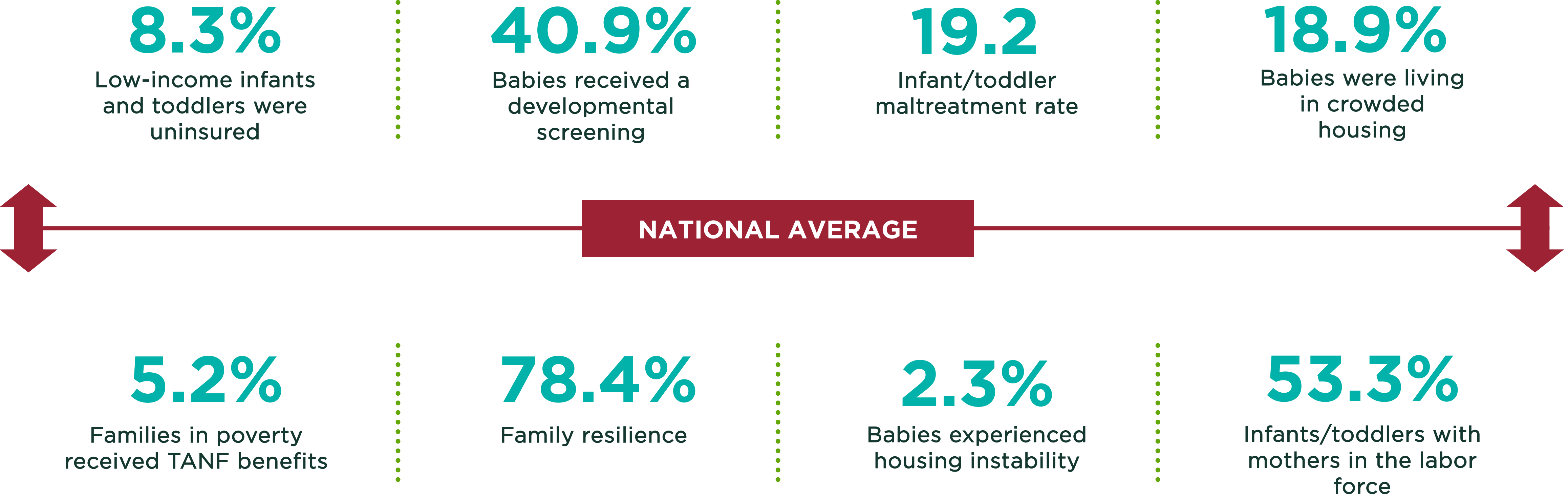
Foster Care

Transition and  
Support  
Services  
for Youth

Healing and Trauma-Informed Care

# **Child Protection and Wellbeing Landscape**

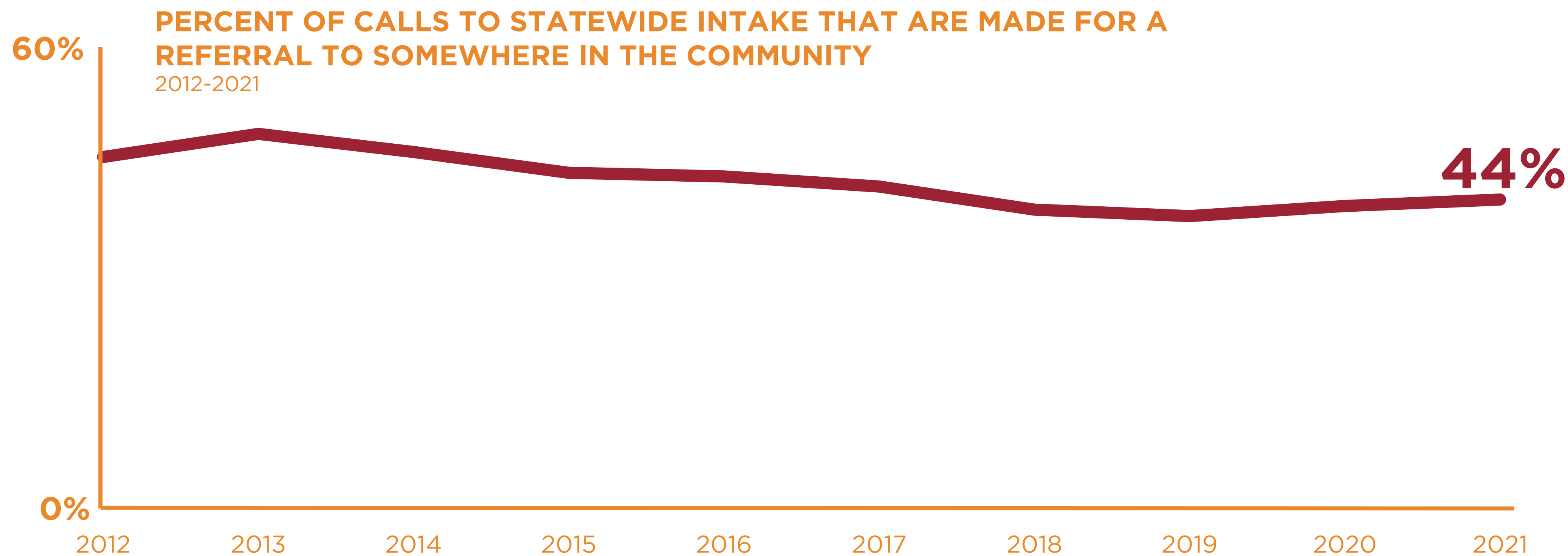
# Texas needs to scale up support services for families



Source: Zero to Three (2022), *State of Babies Yearbook*



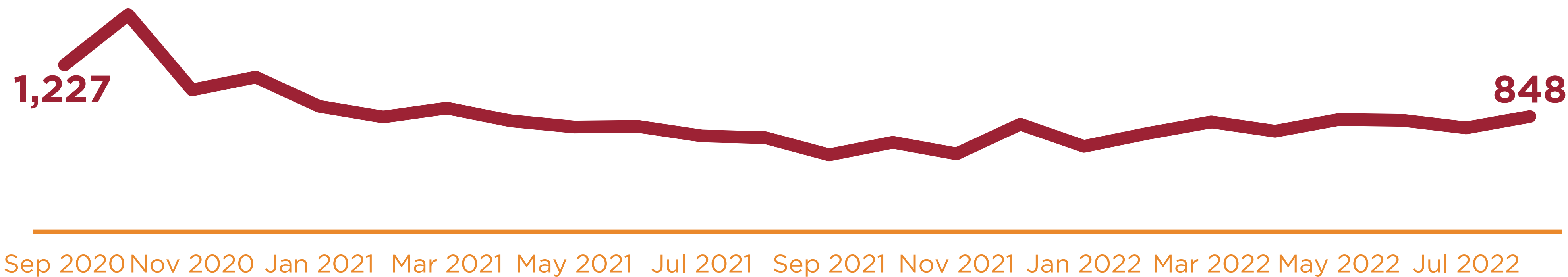
# More than 4 IN 10 statewide intake reports seek other support



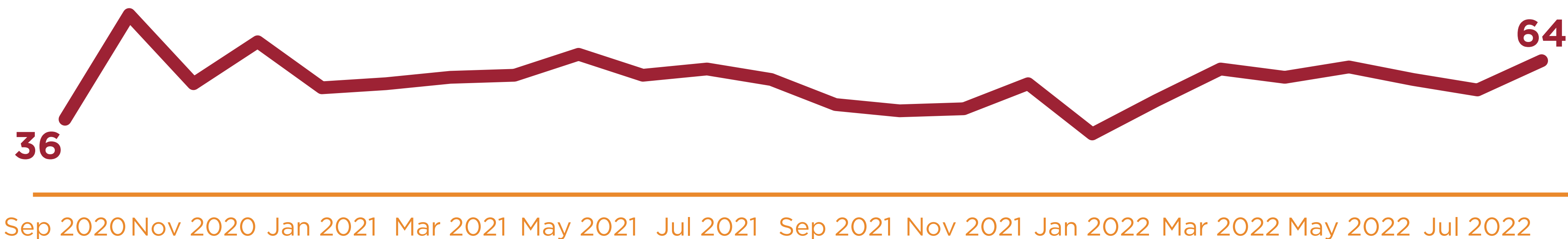
Source: Department of Family and Protective Services Data Book, *Statewide Intake: Type of Contact and Method of Receipt*

# Families on CPS' radar are NOT RECEIVING the ongoing support they need statewide

NUMBER OF FAMILIES REFERRED TO FAMILY-BASED SAFETY SERVICES  
(SEPTEMBER 2020-AUGUST 2022)



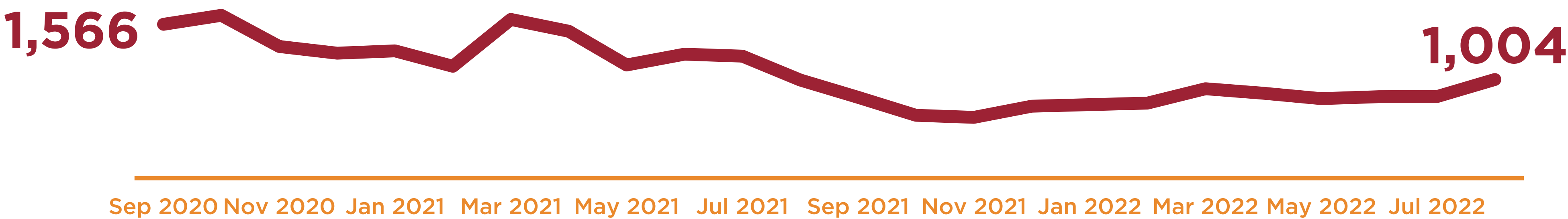
## REGION 1 - LUBBOCK



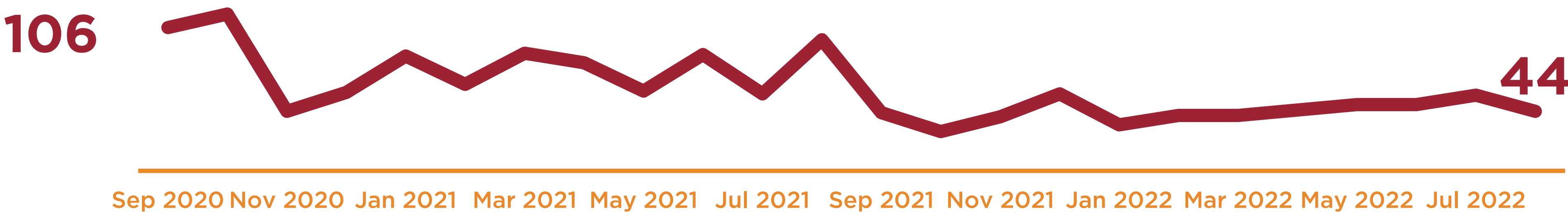
Source: Department of Family and Protective Services Data Book, Number of Completed Investigations by Disposition and Closure Action by State/Region/Stage County

# Overall, child removals have **DECREASED** statewide

NUMBER OF CHILDREN BEING REMOVED FROM HOMES, SEPTEMBER 2020-AUGUST 2022

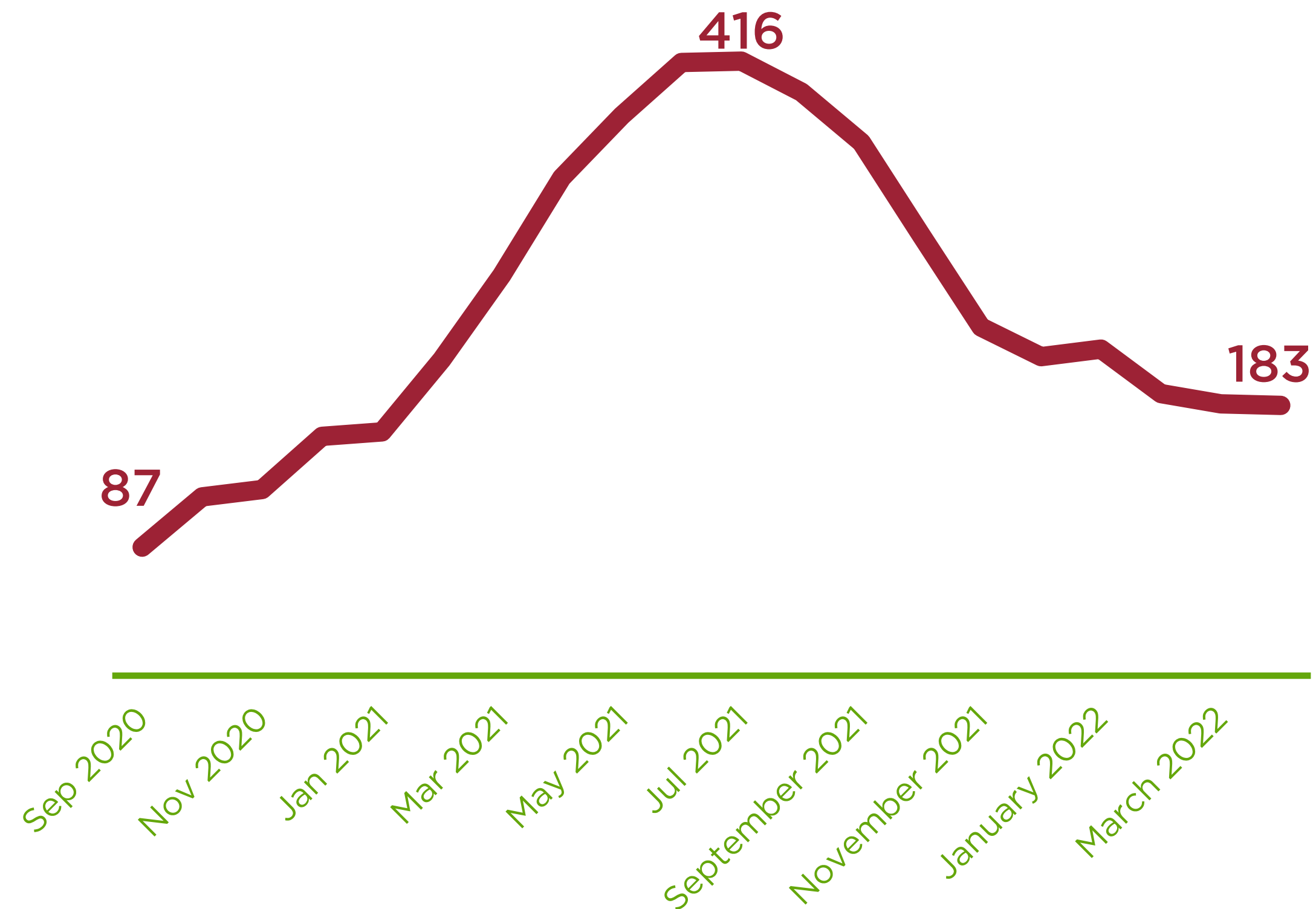


REGION 1 – LUBBOCK

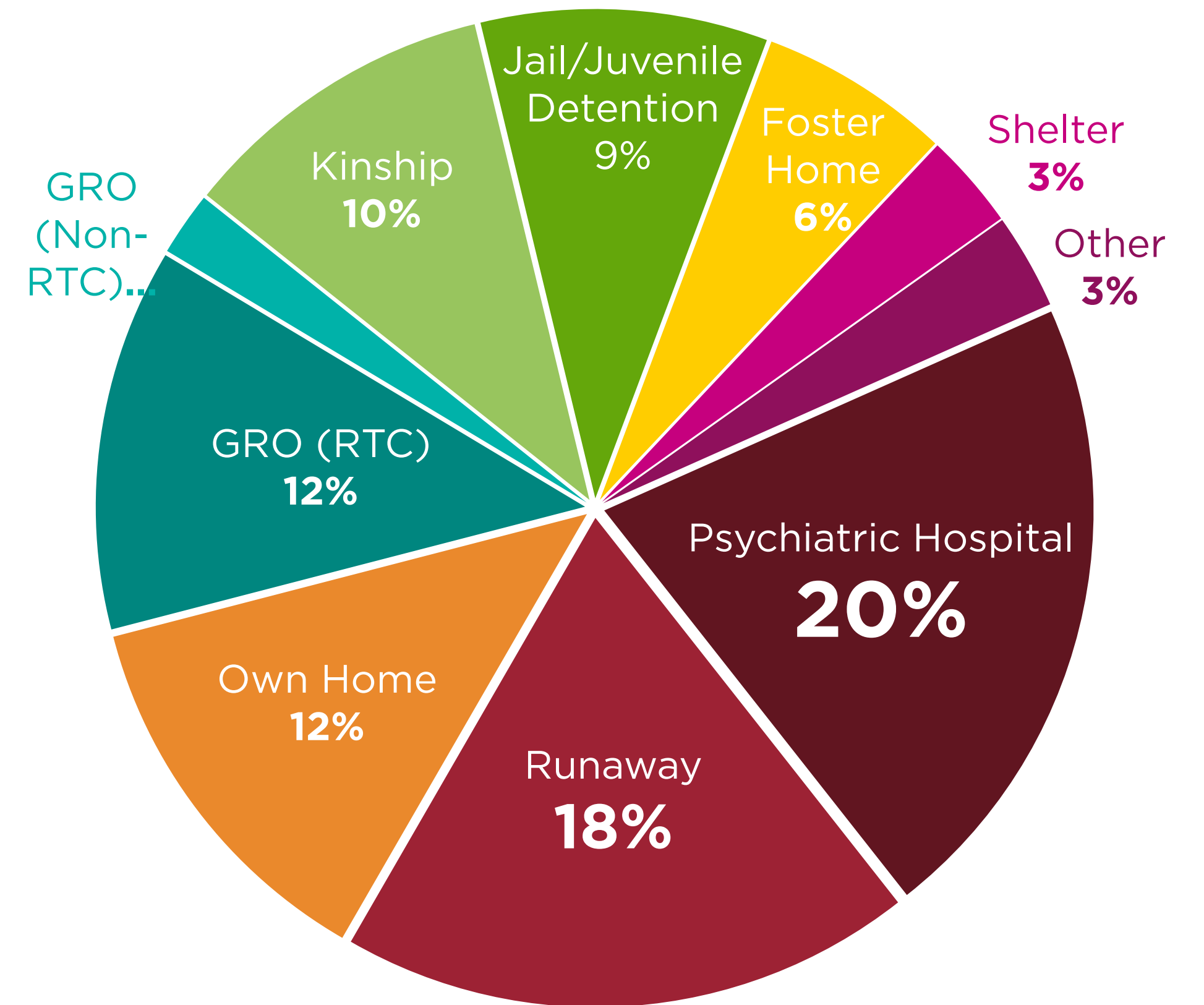


Source: Department of Family and Protective Services Data Book, Demographics of Children New in Substitute Care for Children Age 0-17

# Children Without Placement (CWOP)



Source: Department of Family and Protective Services Data Book, Children Without Placement Report  
Presentation to the Senate Special Committee on Child Protective Services



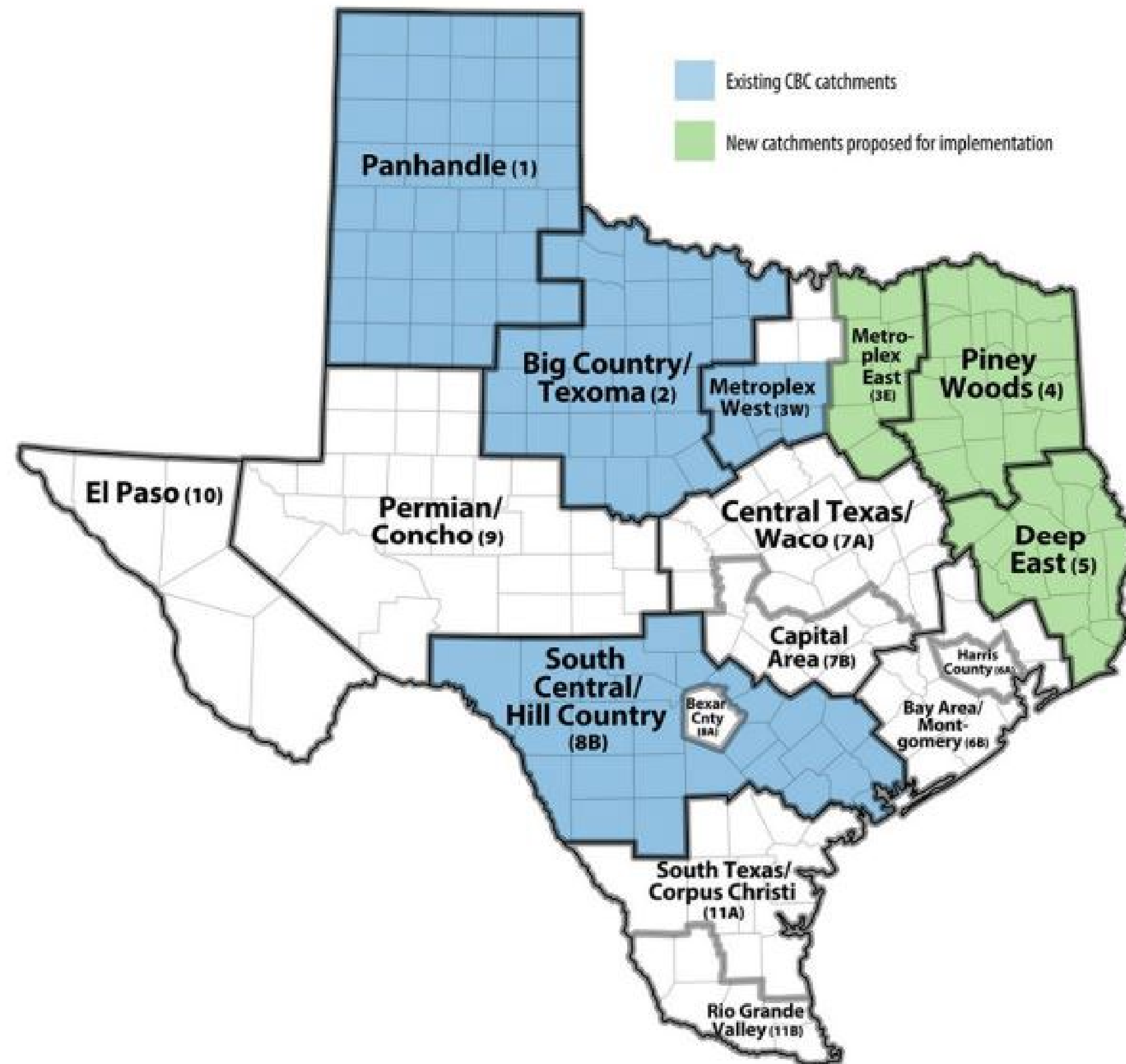
**PERCENT OF CHILDREN IN CUSTODY BY PLACEMENT  
PRIOR TO CWOP STATUS IN 2021**



# Federal Foster Care Lawsuit



# Community-Based Care



## Currently Active:

### Metroplex West (formerly Region 3B and 3W)

- Contracted with OCOK
- Stage II (case management) implemented in March 2020

### Big Country/Texoma (formerly Region 2)

- Contracted with 2INgage
- Stage II implemented in June 2020

### Panhandle (formerly Region 1)

- Contracted with Saint Francis Ministries
- Stage II implemented in March 2022

### South Central/Hill Country (formerly Region 8B)

- Contracted with Belong
- Stage II implemented in October 2022

Office of Community-Based Care Transition: Joint Oversight Committee Hearing Presentation

# Legislative Priorities

Prevention  
Kinship  
Data  
Workforce

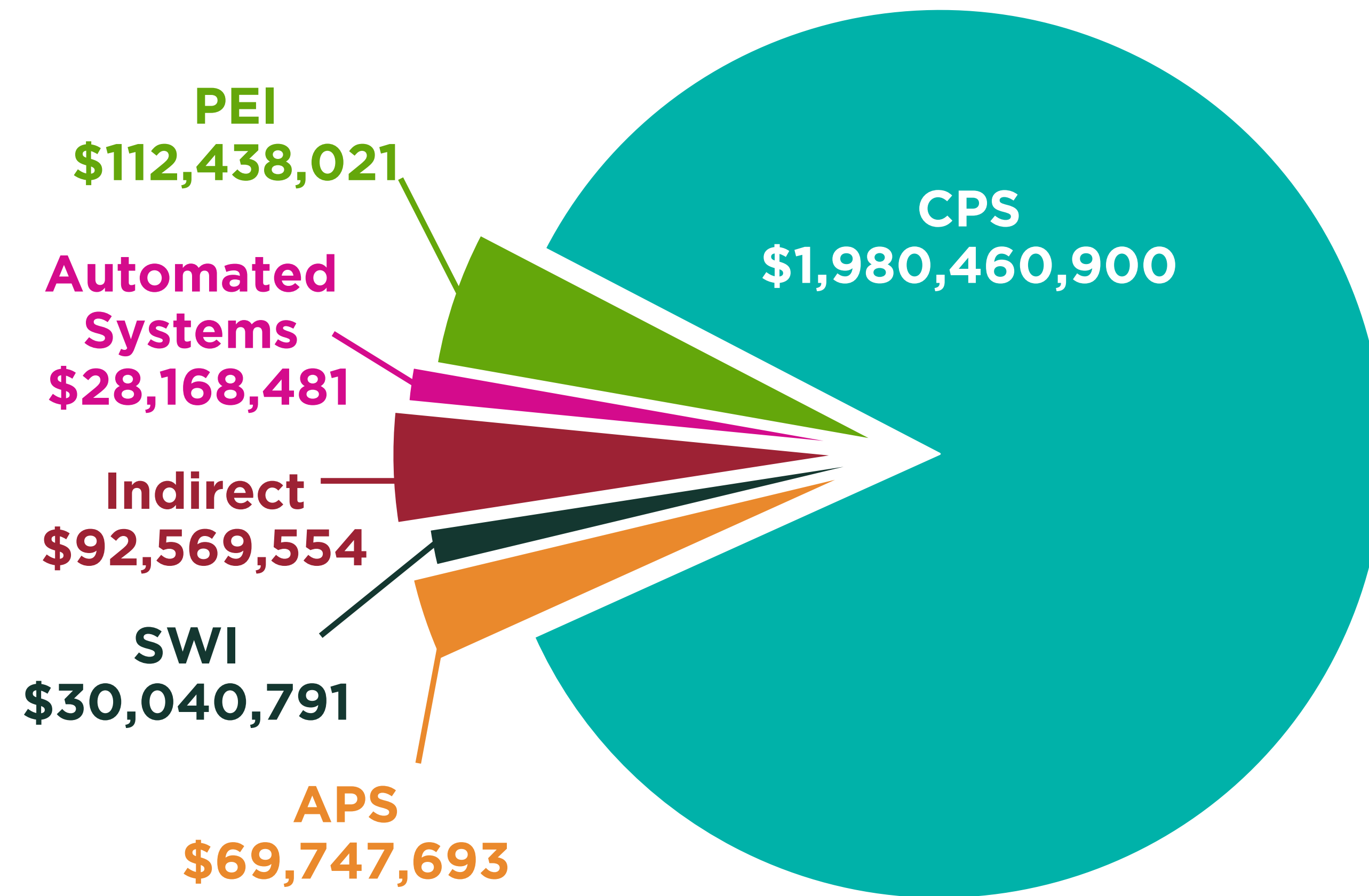
# Prevention

1

**Increase funding for Prevention and Early Intervention (PEI) services**



# Just 5% of Texas' budget is spent on early prevention efforts in comparison to Child Protective Services



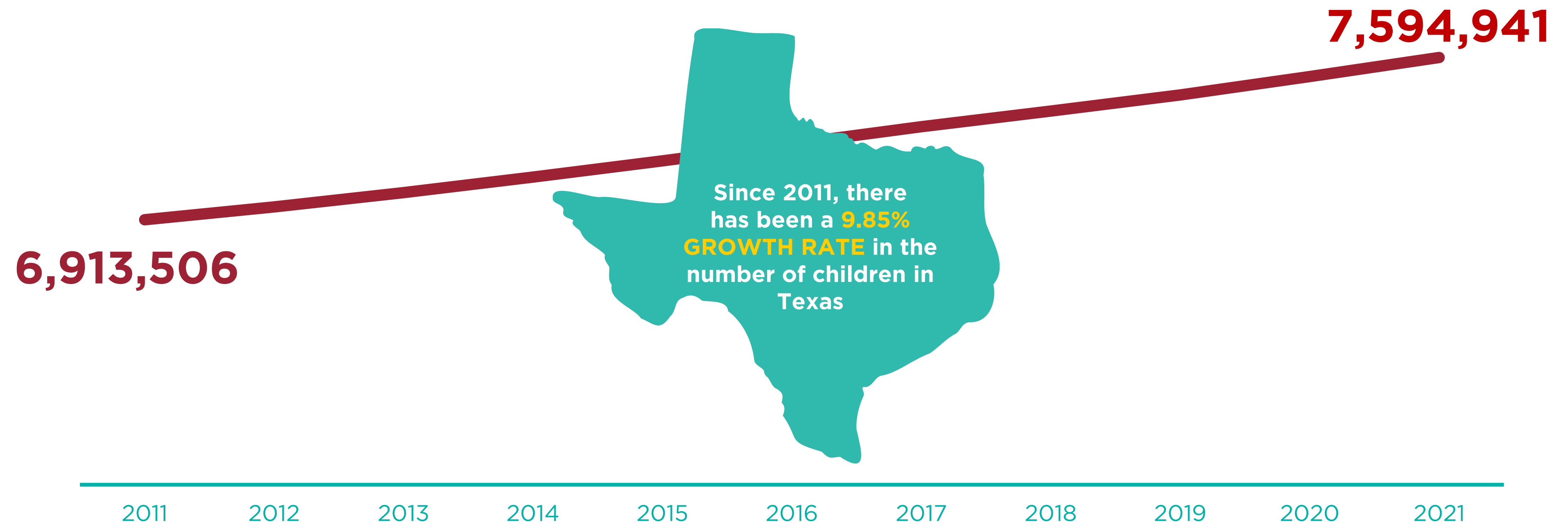
2023 Approved Budget

# Prevention

2

**Scale universal postpartum home  
visitation programs statewide**

# 1 IN EVERY 10 Children in the U.S. Live in Texas



**NUMBER OF U.S. CHILDREN AGES 0-17 YEARS LIVING IN TEXAS, 2011-2021**

Source: Department of Family and Protective Services Data Book, *Texas Child Population*

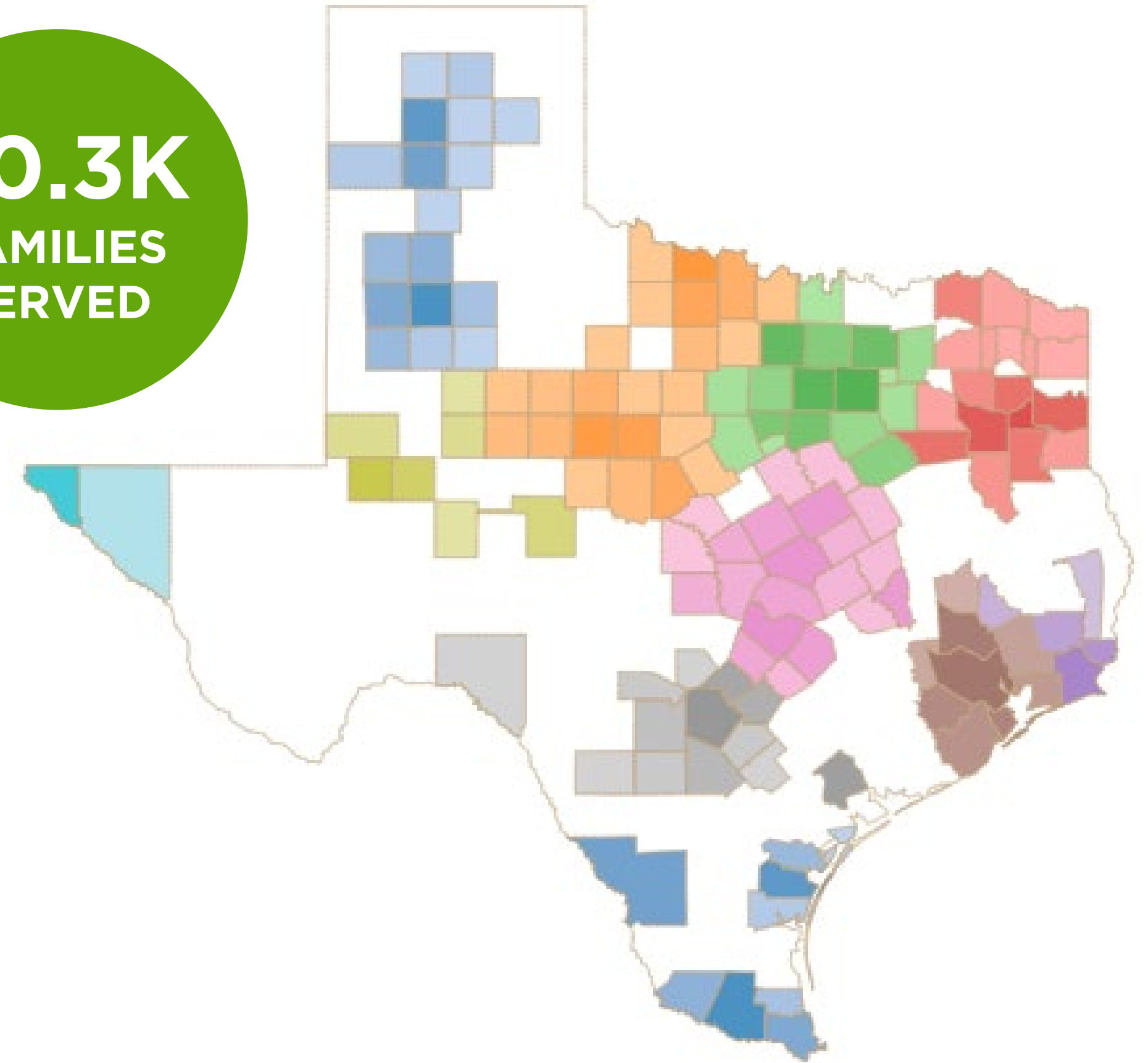
# Who has **ACCESS** to prevention services in Texas?

## FAMILIES SERVED IN CHILD ABUSE/NEGLECT PREVENTION PROGRAMS

SFY 2021 DFPS Prevention and Early Intervention

- **1.8 million** families in Texas with children under age 6
- **413,000** of these families may benefit from Home Visiting services
- Less than **5%** of families who could benefit from Home Visiting receive it

**20.3K**  
FAMILIES  
SERVED

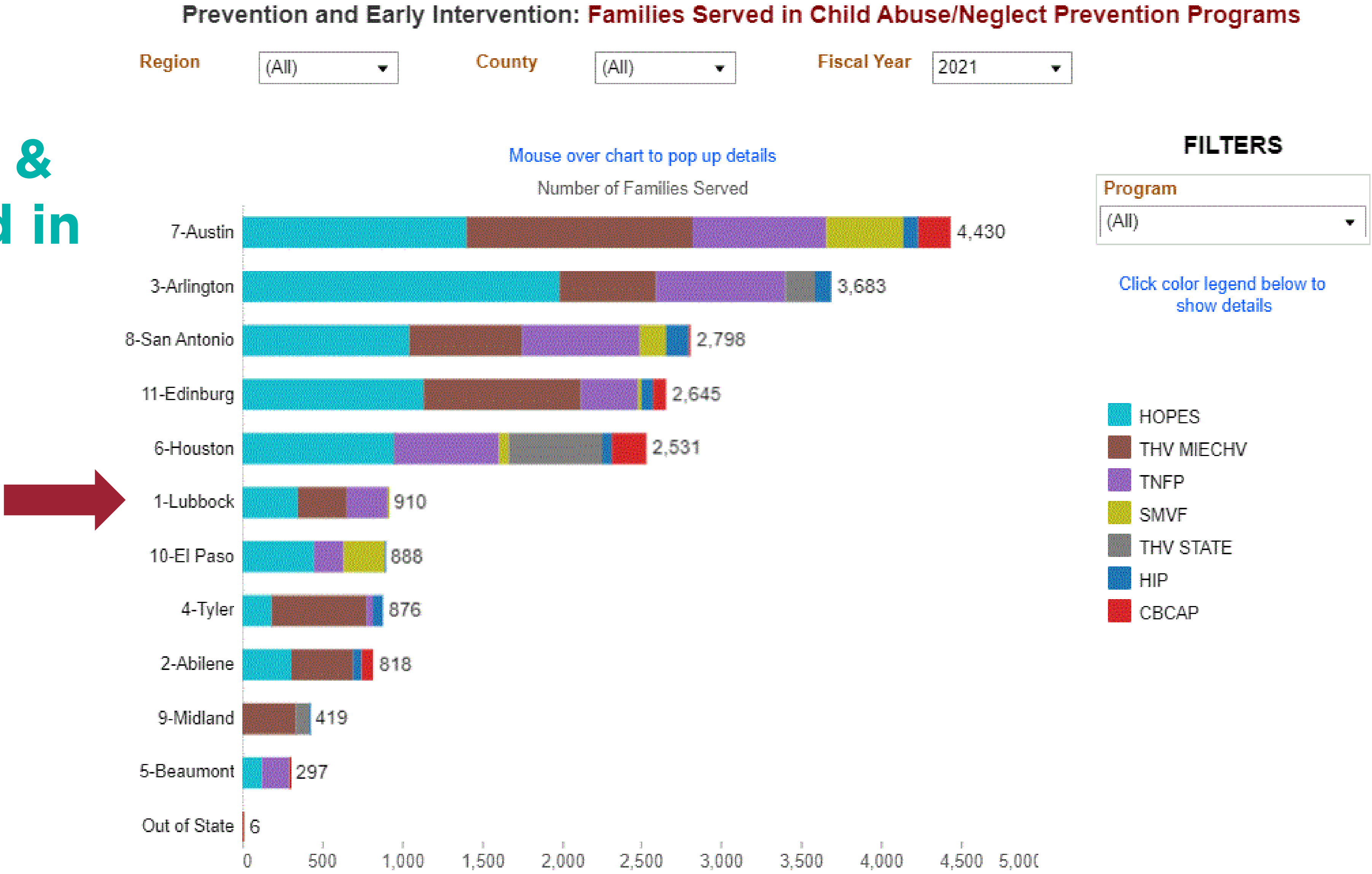


*\*Chart from DFPS PEI website*

*\*Data: Wilson, A.C. & Whitfield, B. (2020). Profiles of Families in Texas who could benefit from home visiting services. State profile created for use by TexProtects with Texas policymakers and state officials.*



# Prevention Programs in the Panhandle & Families Served in 2021



\*Chart from DFPS PEI website

# Home Visiting Outcomes

## Family Connects

30% reduction in maternal postpartum depression or anxiety symptoms

50% less infant emergency medical care at 12 months

44% fewer CPS investigations at 2 years of age; 39% fewer CPS investigations at 5 years

\*Family Connects International: The Evidence

## Parents as Teachers

22% decreased likelihood of child maltreatment substantiations

50% fewer cases of suspected abuse or neglect

\*Parents as Teachers: An Evidence-Based Home Visiting Model

# Prevention

3

**Improve the delivery and availability of prevention services for children to prevent Adverse Childhood Experiences (ACEs)**

# Response to ACE's Survey

Questions Taken from the Original ACE Study	%	Population Estimate
Parent or guardian divorced or separated	25.8	1,809,973
Parent or guardian served time in jail	7.1	494,521
Saw or heard parents or adults slap, hit, kick, punch one another in the home	6.0	418,843
Lived with anyone who was mentally ill, suicidal, or severely depressed	9.8	684,684
Lived with anyone who had a problem with alcohol or drugs	8.4	582,042
<b>Additional ACEs Questions Identified by National Survey of Children's Health</b>		
Parent or guardian died	3.2	228,544
Was a victim of violence or witnessed violence in his or her neighborhood	4.4	307,855
Treated or judged unfairly because of his and her race or ethnic group	5.0	347,730
Parent or guardian has a tough time covering food and housing on the family's income (somewhat often)	12.4	891,052
Parent or guardian has a tough time covering food or housing on the family's income (very often)	4.3	309,404

*The Economic Cost of Adverse Childhood Experiences*

# Trauma results in the increased likelihood of negative outcomes across the lifetime



## Mothers & Babies

- Low birth pregnancy weight
- Pre-term birth
- Health risks during pregnancy
- Health risks to the infant



## Brain Development

- Cognitive impairment
- Structural abnormalities
- A toxic stress response system



## Mental & Physical Health

- Chronic disease (diabetes & cancer)
- STIs
- Depression, Anxiety, Bipolar Disorder
- Eating disorders
- Suicide attempts or completion



## School & Work

- Expulsion from school
- Academic failure
- Lost time from work for treatment



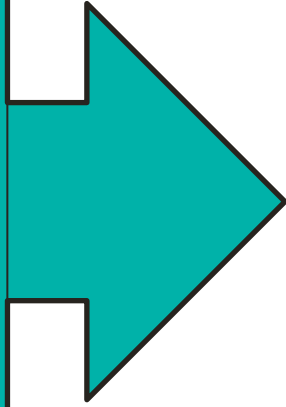
## Risky Behaviors

- Substance use & Smoking
- Violence against others
- Unsafe/risky sex



# The Economic Impact

Child Maltreatment

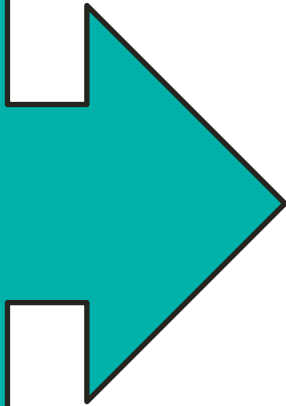


TexProtects estimates that the lifetime costs associated with confirmed child maltreatment in Texas in 2019 alone is \$52.9 billion.

National costly risk factors associated with ACEs include:

- illicit drug use, \$168 billion in costs attributable to ACEs annually
- smoking, \$160 billion annually
- harmful alcohol consumption, \$73 billion annually
- obesity, \$65 million annually

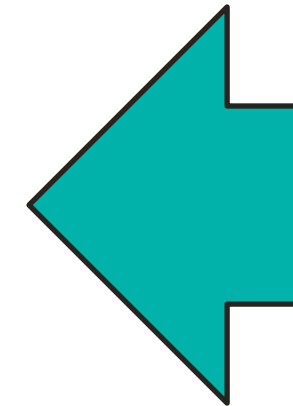
Economic Stability



Research shows that preventing ACEs may reduce trauma within families and improve their later financial outlook. Having four or more ACEs, compared to having none, is associated with being 1.6x more likely to live in poverty as an adult.

In 2019, about 1.5 million Texas children were living in poverty. Compared to other states, Texas ranks 40th/50 in the United States for the overall poverty rate

Health



*The Economic Cost of Adverse Childhood Experiences*

# What Can We Do?

1

Connect with stakeholders in communities around Texas to identify what's working and what is needed to get to root causes of childhood adversity.

2

Bring community guidance back to state agencies to identify strategies to increase effectiveness of state prevention dollars.

3

Propose recommendations to the next legislature so Texas can do more of what works and less of what doesn't to keep children safe and families strong.

# Kinship

1

**Develop and fund a pilot program that will increase financial and legal supports for relatives to prevent a removal**

# Defining Kinship

Relatives or friends of the family who step in to care for a child when they are unsafe to remain in the home with their parent(s).

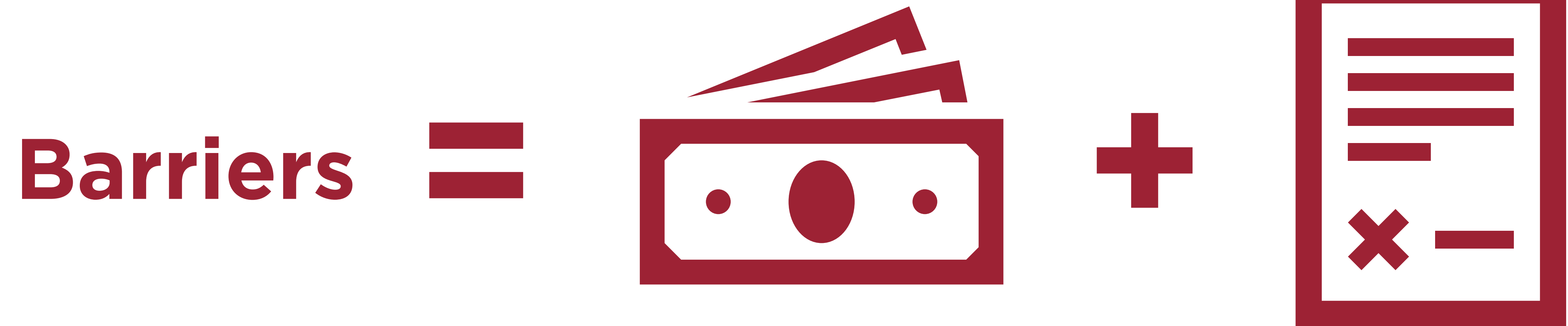
## Informal Kinship Placement:

- Kin providing care but the state doesn't have custody of the child
- Could be outside of the CPS system entirely
- Our focus = Open Investigation or FBSS stage

## Formal Kinship Placement:

- Kin providing care but the state has custody of the child
- Verified vs Unverified = Licensed vs Not Licensed

# Supporting Informal Kinship Placements





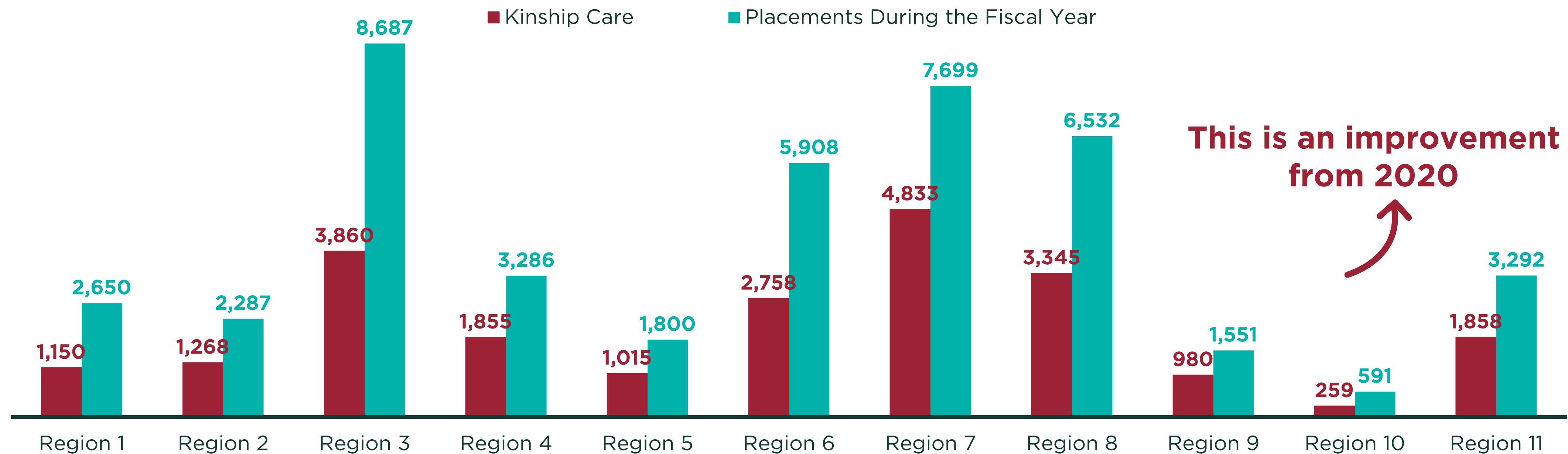
# Kinship

2

**Ensure kinship caregivers can receive pay parity to that of a licensed placement for the duration a child is in their home**

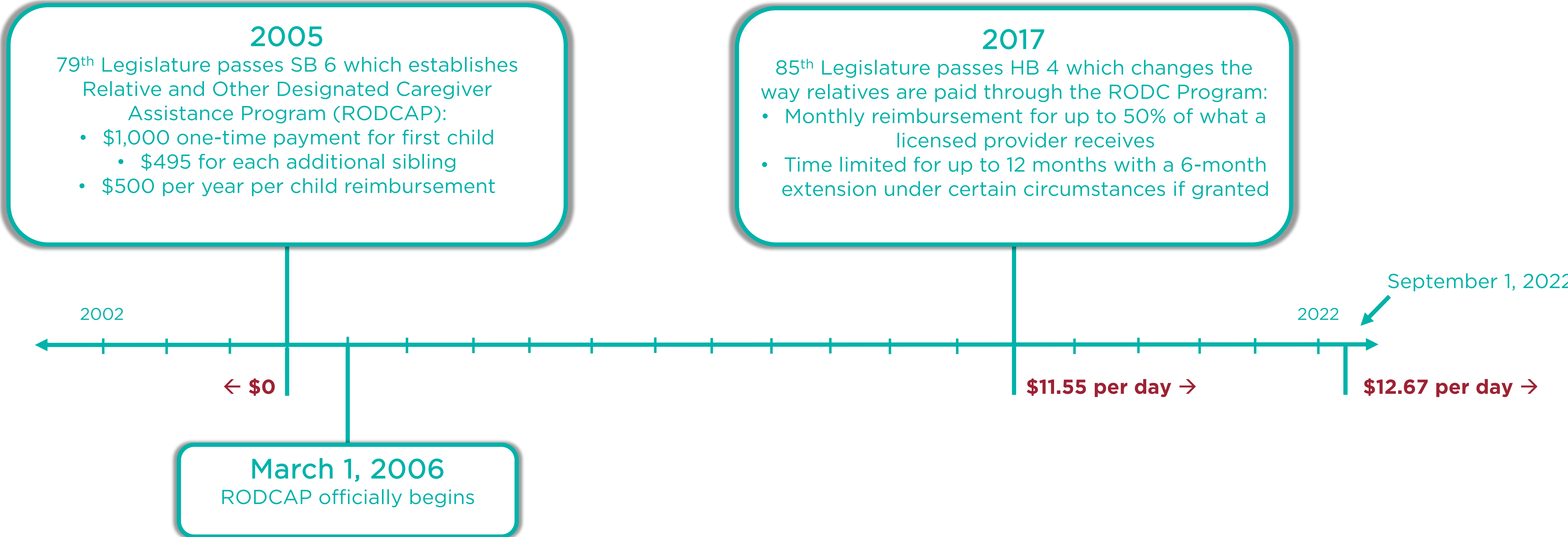
# AT LEAST 43% of children in substitute care were placed in a kinship home in 2021

## NUMBER OF CHILDREN PLACED IN KINSHIP CARE COMPARED TO TOTAL NUMBER OF PLACEMENTS IN 2021, BY REGION



Source: Department of Family and Protective Services Data Book, *CPS Substitute Care: Placements During Fiscal Year*

# Increasing Support to Kinship Caregivers Who Are Not Licensed Over the Past Two Decades



## Kinship Pay Parity Recommendations:

- ✓ Remove the 12-month limit to ensure that whoever the child is placed with receives compensation for the duration of the case.
- ✓ Remove the 50% cap and decouple the reimbursement rate from the current rate system since there is currently a project underway to update rate methodology.
- ✓ Ensure there is payment for an approved placement, whether that is DFPS that approves it or a court order that approves it.

# Data

1

**Ensure monthly data is available on critical child protection measures**



# DFPS has created a monthly data landing page

I am ▾

Child Investigations ▾

Child Services ▾

Adoption & Foster Care ▾

Prevention ▾

Adult Protection ▾

Doing Business ▾

Data & Reports ▾

▸ Policies

OUR PEOPLE

▸ Council

• Executives

• Faith-Based Partners

• Jobs

• Volunteers & Interns

INFORMATION & STATISTICS

• Annual Report

• Data Book

• Budget and Finance

• Reports, Statistics, and Presentations

• Rulemaking

• Strategic Plans

Key Metrics Monthly Dashboard

Fiscal Year 2022

Fiscal Year 2021

Child Protective Services (CPS) Dashboard

Other Metrics, Fiscal Year 2022

Alleged Victims of Child Abuse/Neglect by Type in Completed Investigations

Children in Substitute Care Placements by Living Arrangement Categories (0-17)

CPS Intakes Assigned for Investigation

CPS Reports of Abuse/Neglect By Primary Allegation and Priority

CPS Reports Of Abuse/Neglect By Report Source and Priority

Demographics of Children in Conservatorship by Legal Status

Demographics of Children in Substitute Care by Permanency Goal

Demographics of Children New In Substitute Care For Children Age 0-17

Demographics of Children No Longer in DFPS Responsibility

Families and Children in Family Preservation

Number of Completed Investigations by Disposition and Closure Action

Young Adults in Extended/Return to Care Placements by Living Arrangement Categories (18+)

Children in DFPS Care

The statistics below are for children in DFPS care. There is data for each of the 11 DFPS regions. This includes age, sex, ethnic group, disabilities, and the level of services the children receive.

?

FILTERS

Year

2022

Month

August

Region

(All)

County

(All)

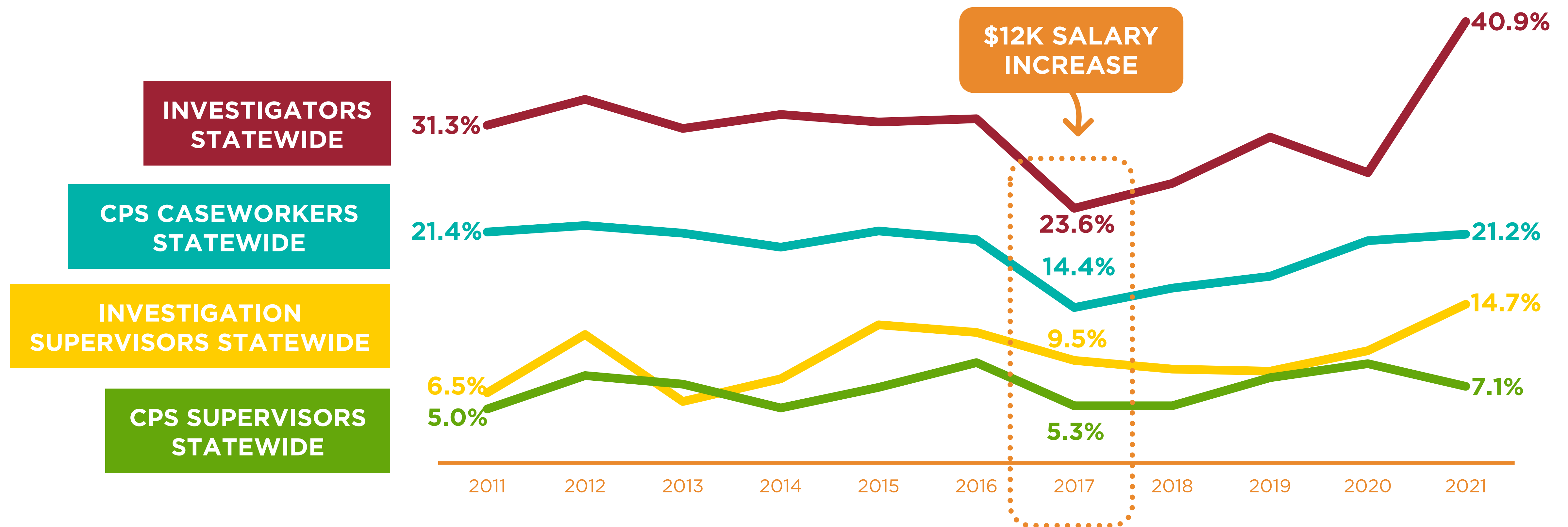
[https://www.dfps.state.tx.us/About\\_DFPS/Monthly\\_Data/default.asp](https://www.dfps.state.tx.us/About_DFPS/Monthly_Data/default.asp)

# Workforce

1

**Require DFPS to publish a workforce plan on how to retain a high-quality workforce and elevate high-producers into leadership**

# Workforce turnover has **INCREASED FOR STAFF** since 2017



Source: Department of Family and Protective Services Data Book, [Child Protective \(CPI/CCI/CPS\): Staff Turnover](#)

# Workforce Pay Differential

## Average Monthly Salaries for FY21

Investigators: \$4,315.20

CPS Caseworkers: \$4,467.32

Investigations Supervisors: \$5,169.04

CPS Supervisors: \$5,211.76

Investigations PD/PAs: \$5,836.68

CPS PD/PAs: \$5,961.66

Source: Department of Family and Protective Services Data Book, Child Protective (CPI/CCI/CPS): Average Monthly Salaries

## Losses in Benefits When Promoted

Investigators lose their stipend

CPS Supervisors and Program Directors no longer can earn overtime

No longer benefit from travel check since they are at their desk more



# Breakout Discussions

## Audience Participation

### Prevention Breakout Room

Prevention Funding  
Universal Postpartum Home Visitation  
ACEs

### System Involvement Breakout Room

Kinship  
Data  
Workforce



# Get Involved



Go to our [website](#) and sign up to receive child welfare advocacy alerts

## Stay Informed

Get updates on the issues and impactful ways to help.

# Be A Champion for Texas Children





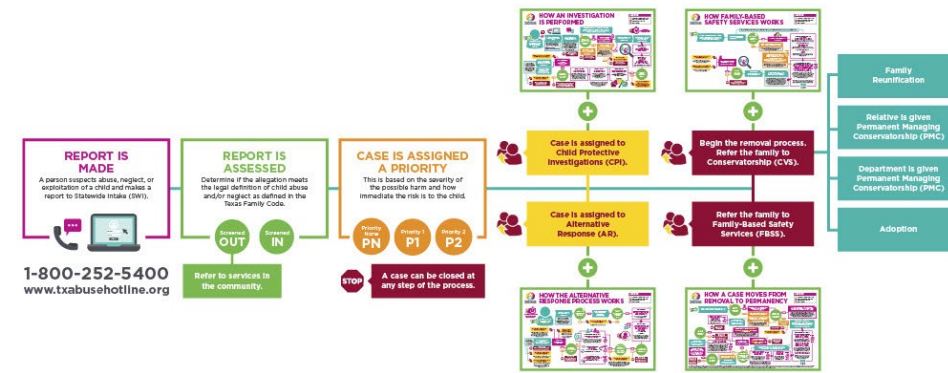
# Resources

## State of the State

## 2021 Texas Child Protection System Trends



## **HOW THE TEXAS CHILD PROTECTIVE SERVICES SYSTEM WORKS**



TexProtects Presents

# CPS 101



## State of the State Report

## Child Protection Services Flow Charts (5)

CPS 101



## Home Visiting Advocacy Toolkit

Join our [#HomeVisitingIsEssential](#) advocacy campaign! In this toolkit, you will find everything you need to educate and motivate your audience on social media and contact your policymakers so that these proven programs are protected and strengthened, and families have access to these programs when they are needed most.

## Background

Home visiting is a prevention strategy used to support pregnant moms and new families to promote maternal and child health, foster school readiness, and prevent child abuse and neglect. Home visiting programs take a two-generational approach to decrease risk and increase protective factors to support caregivers and their children's needs.

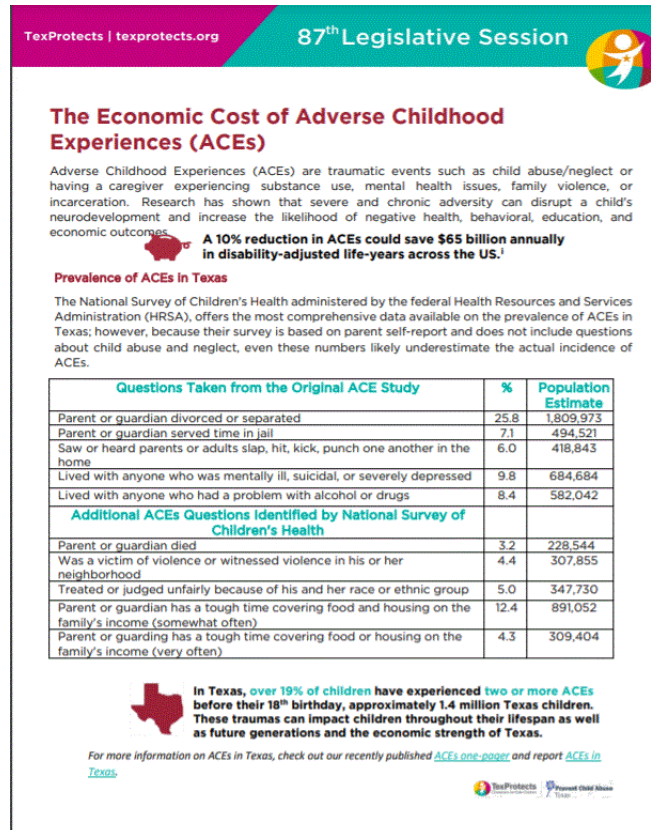
Reconciling parents as their child's first, and often best, teacher is the foundation of home visiting. Decades of research in child health has made clear the importance of children's early experiences and the opportunities inherent in the early years. The quality of these early experiences shapes brain development, which impacts future biology, behavior, and health across the lifespan. This research points to the value of ensuring access to safe, stable nurturing caregiving during the early years. Voluntary home visiting is a vehicle to connect parents and their young children to resources to protect children and foster child development by ensuring families have support when needed.

### Campaign Goal and Recommendations

Goal - Ensure that home visiting investments are secured and strengthened in the upcoming 87<sup>th</sup> legislative session by engaging legislators through social media, meetings, calls, and letters with constituents and programs across the State.

Recommendations - Protect and invest in community-based, primary child abuse prevention programs for children prenatal to 5 when development matters most.

- Fully support DPFS Exceptional Item #4 (which includes \$4.3 million for Project HOPE)
- Increase Nurse Family Partnership funding by \$4 million to improve access to existing communities.
- Leverage the federal match made available by the Family First Prevention Services Act as well as Family Transition funds to increase home parenting programs available to families at imminent risk of entering foster care.
- Expand universal prevention approaches (including Family Connects) in public health settings to ensure that new families are safe, healthy, and connected to community resources when needed.



## Home Visiting Advocacy Toolkit

## The Economic Cost of ACEs

## Transforming the CPS System



An Overview of Existing Outcome Measures for our Child Protection System and Recommendations for Improvement

Texas' longstanding federal lawsuit, foster care capacity crisis, and continued fall-out from the COVID-19 pandemic have brought to the surface not only the immediate challenges to providing safety for children who are in the state's care but also increased attention by lawmakers, stakeholders, and the public on how we can better assess whether or not our system and our taxpayer dollars are producing positive outcomes. Embedded in this discussion is the need for more reliable and consistent data, greater transparency, but also, more foundational questions about whether our existing system is measuring what matters to ensure accountability and that investments, practices, and policy are moving the needle in the right direction for children and for Texas as a whole.

**T**he vision of the Department of Family and Protective Services is to improve the lives of those they serve by achieving their mission of promoting safe and healthy families and protecting children's vulnerability to abuse, neglect and exploitation. The question is whether or not our investments and strategies are achieving those results.

To begin answering this question, TexProtects has begun an exploration of child welfare outcome

This report aims to bring forward existing child welfare outcome measures as defined by the federal government as well as state leadership. In doing so, our goal is to improve understanding of what we are measuring and how we are measuring performance to national performance as well as examine statewide trends, and prompt analysis of how state measures are capturing program successes and failures of the existing system or the system that children and families need.

Indicators to assess where we are as well as where improvements might be made to better capture what all child welfare stakeholders desire – safety, permanency, and well-being for all children who are removed from their families because of abuse and neglect and ultimately, a child protection system that is rarely needed because child abuse and neglect are prevented.

A statewide and effective system to improve lives, promote healthy families, and protect children is one worth supporting. But to achieve those goals requires the right questions, appropriate goals, strategic decisions, and unwavering dedication to purpose. And it requires that we measure what matters to change outcomes.

1 Texas Child Welfare Outcomes | TexProtects.org



# Thank You!

## Texas Child Welfare Funders

---





# Contact Us

**Jordan Watson**

*Vice President of Policy and Government Affairs*

(281) 660-3355

[jordan@texprotects.org](mailto:jordan@texprotects.org)

**Brittney Taylor, MPAff**

*Prenatal to Three Policy Manager*

(469) 546-3002

[brittney@texprotects.org](mailto:brittney@texprotects.org)

**Kerrie Judice, LMSW**

*Child Protection Policy Manager*

(469) 289-5679

[kerrie@texprotects.org](mailto:kerrie@texprotects.org)

**Emily Williams, LMSW**

*Mental Health Policy Fellow*

(469) 289-5670

[Emily@texprotects.org](mailto:Emily@texprotects.org)

**TexProtects.org**

